

# Multi Agency Child Exploitation (MACE) and Contextual Safeguarding Strategy 2020/23

Enter



# Foreword

## We are pleased to present our North Yorkshire Safeguarding Children Partnership (NYSCP) Multi agency Child Exploitation and Contextual Safeguarding Strategy for 2020/21.

Child Exploitation is a form of child abuse that impacts on the lives of children, young people, their families and the communities of North Yorkshire. We know from the work we do with children and families that the impact of this form of abuse can be long lasting and destructive to children achieving a happy, healthy and safe childhood.

It is important that the work we do has a strong focus on preventing harm and that we listen to children, families and communities about how we can equip them with the knowledge of the early signs of all forms of child exploitation; how to seek help; what support is available and what we can and do to keep children safe.

It is equally important that those who perpetrate abuse are quickly identified and dealt with and that those who seek to abuse and cause harm to children and young people understand the impact their actions cause and the consequences of persisting or engaging in this form of child abuse.

This strategy builds upon the work already established to tackle child exploitation across North Yorkshire through our NYSCP Multi Agency Child Exploitation (MACE) arrangements (previously VEMT) which have been in place since 2015. As such, this strategy outlines our continued commitment to a co-ordinated partnership approach to tackle all forms of child exploitation across North Yorkshire and ensure that the right resources are well trained, skilled and in place to drive the activity outlined within the document.



**Dr Maggie Atkinson**  
Independent Scrutineer  
NYSCP



**Stuart Carlton**  
Corporate Director  
Children and Young Peoples Service  
North Yorkshire County Council



**Annette Anderson**  
Assistant Chief Constable  
North Yorkshire Police



**Sue Peckitt**  
Executive Nurse  
North Yorkshire Clinical  
Commissioning Group

# Overview

The Multi-Agency Child Exploitation (MACE) and Contextual Safeguarding Strategy recognises that children and young people can be at risk of, or subjected to harm through exploitation and abuse from adults and/or other peers outside of their family network. When a child moves through early childhood into adolescence, they invariably become involved in social networks, relationships and environments outside of their school and home setting. The majority of children in North Yorkshire make this transition in a safe and fulfilling way. However, all children and young people can encounter individuals who exploit vulnerability and environments which place them at risk of exploitation.

Often parents and carers are disempowered by the perpetrators of this form of abuse who will try to undermine the relationship between the parent or carer and their child to further the control they have over that child. For this reason, in terms of the identification, responding to and management of MACE and Contextual Safeguarding risks, parents are often part of the solution and this strategy outlines the need for full engagement with parents and/or carers by professionals.

Throughout all the work of North Yorkshire Safeguarding Children Partnership, the voice of the child should be effectively represented in accordance with the guidance set out in Working Together to Safeguard Children (2018) (WTSC18) as outlined below:

**‘Children may be vulnerable to neglect and abuse or exploitation from within their family and from individuals they come across in their day-to-day lives. These threats can take a variety of different forms, including: sexual, physical and emotional abuse; neglect; exploitation by criminal gangs and organised crime groups; trafficking; online abuse; sexual exploitation and the influences of extremism leading to radicalisation. Whatever the form of abuse or neglect, practitioners should put the needs of children first when determining what action to take’ (WTSC18; 9)**

By the very nature of vulnerability and exploitation the different themes of exploitation are invariably intertwined. This strategy considers vulnerability and contextual safeguarding from a holistic and ‘whole system’ perspective. The risks and vulnerabilities of the child are seen as a complete picture so their needs can be addressed in a way that improves their long term outcomes, as opposed to reducing risk in one particular area of vulnerability.

Extra-familial exploitation and abuse does not discriminate and impacts across culture, age, gender or geography (both offline or online) and as such incorporates a number of areas of criminality. Exploitation also often occurs without the child’s immediate recognition and/or with the child believing that they are in control of the situation and can therefore be difficult to identify. Further, the nature of life in the 21st Century is that online and offline domains are no longer two distinct and separate areas. The relationship between the two is now fluid and interchangeable and as such we need to be able to recognise and respond to this effectively.

This MACE and Contextual Safeguarding strategy aims to build on existing structures in place across North Yorkshire to bring together expertise, knowledge and skills to deliver services in a co-ordinated way across the following strands of exploitation:

- Child Sexual Exploitation (CSE)
- Child Criminal Exploitation (CCE) including County Lines
- Children Missing from Home (MFH)
- Harmful Sexual Behaviour (HSB)
- Modern Day Slavery and Human Trafficking (MSHT)
- Online Child Exploitation
- Wider Contextual Safeguarding

It is of note that this list is not exhaustive and that the NYSCP MACE and Contextual Safeguarding strategy will evolve over time to address the changing dynamics of exploitation and address future and emerging threats and risks.





## Vision:

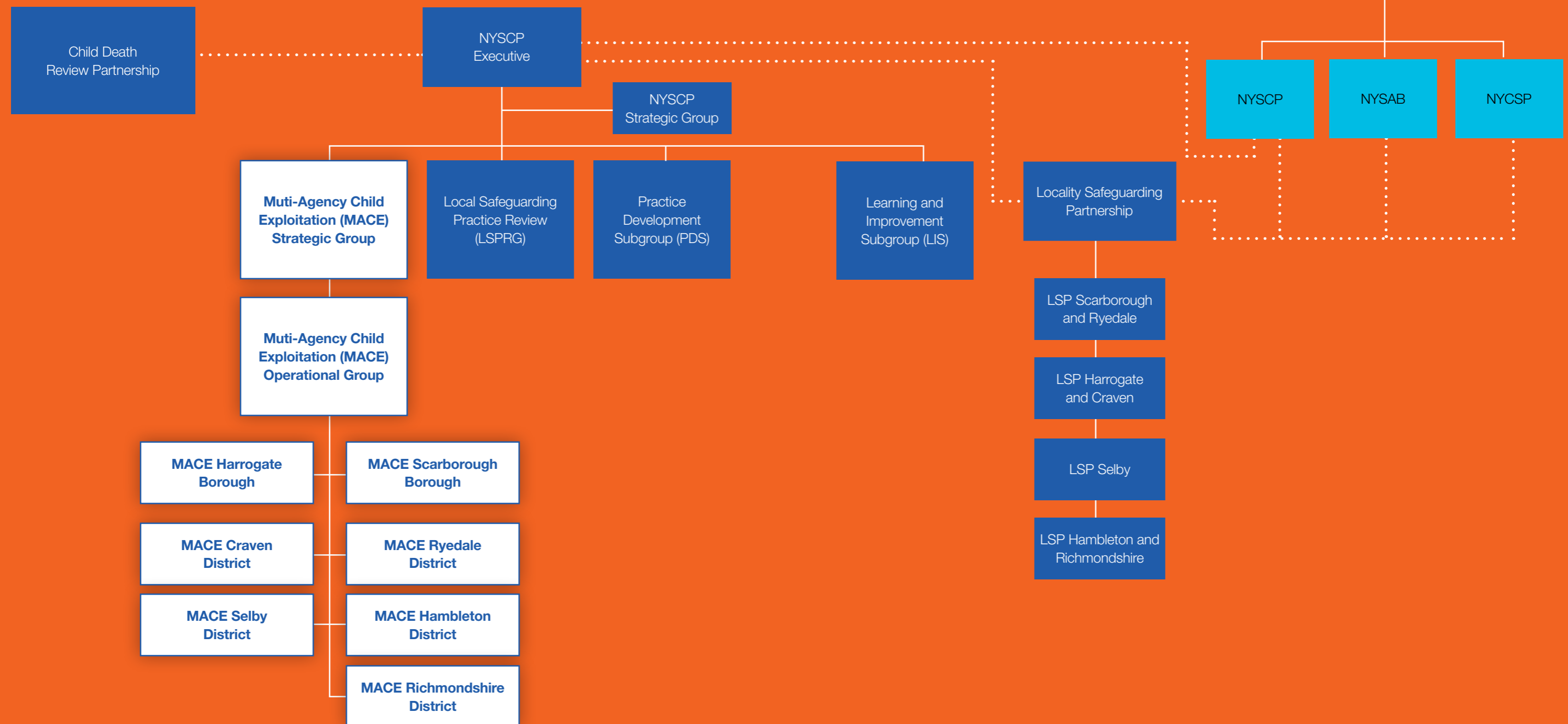
NYSCP's vision for our MACE and Contextual Safeguarding arrangements is that:

*“All children in North Yorkshire who are vulnerable to exploitation and abuse are effectively identified and protected by services which are delivered in a co-ordinated and informed way that consistently responds to the risks and improves the outcomes for our children, their families and the wider community”.*

In order to achieve this, we have set out four clear priorities over the next three years. It requires a clear coordinated action plan to be delivered across our North Yorkshire Safeguarding Children Partnership and is driven forward within our local communities. It involves looking at Child Exploitation and Contextual Safeguarding from a 'whole system' approach and focuses on creating strong partnerships that can deliver creative problem solving action plans to create safe spaces for the children and young people of North Yorkshire both online and in the real world.

# Partnership Structure:

The Multi-Agency Child Exploitation and Contextual Safeguarding strategy sits within our wider Safeguarding Children Partnership arrangements. The strategic arrangements are overseen by our MACE Strategic Group that reports into the NYSCP Executive. Underneath the Strategic group, we have an MACE Operational group and then the MACE Locality Groups that operate across the seven district areas of North Yorkshire; Scarborough, Ryedale, Harrogate, Craven, Hambleton, Richmondshire and Selby.



## MACE Strategic Group

### Chair - NYCC Safeguarding Unit Manager

#### Membership:

- NYSCP Manager
- NYCC Head of Safeguarding
- NYP Det.Supt Head of Safeguarding
- Head of Engagement and Governance
- Head of Practice, Personalisation and Safeguarding
- NY Police, Fire and Crime Commissioners Office
- NYSCP Policy and Development Officer
- CCG Designated Nurse
- Head of Engagement and Governance
- MACE Operational Group Chair
- Head of Safer Communities, Policy & Practice
- NYP Intelligence Research & Analysis Manager

## MACE Operational Group

### Chair Senior Manager Children Social Care, North Yorkshire Police, Health (Rotated)

#### Membership:

- NYSCP Policy and Development Officer
- NYP Chief Inspector, Safeguarding
- NYCC Youth Justice Service Manager
- Community Safety Partnership Lead
- Children Society Manager
- Trusted Relationships Project Coordinator
- NY Police, Fire and Crime Commissioners Office
- NYCC Children Social Care Group Manager
- HDFT Named Nurse
- NYCC Education Lead Advisor for SEMH Health and Adult Services Lead
- Parents Against Child Exploitation Manager
- NYCC Early Help Group Manager
- Prevention Officer for Regional Organised Crime Unit Children Society

## MACE Locality Groups

### Chair NYSCP Policy and Development Officer

- NYCC Children Social Care/Early Help
- North Yorkshire Police
- Community Safety Partnerships
- The Children Society - 'Hand in Hand'
- Private Care Providers e.g. Cambian
- CAMHS
- HDFT Healthy Child team
- Youth Justice Service Education
- NYCC Leaving Care Team
- Parents Against Child Exploitation Compass Reach
- Housing Providers
- Secondary and College Education Establishments
- North Yorkshire Police
- Licencing
- Probation

# Strategic Priorities:

This MACE and Contextual Safeguarding strategy has identified four key priorities across our partnership. These four priorities will be underpinned by a detailed action plan that holds partners to account for their plans to fulfil the actions set out across our priority areas.





# NYSCP MACE and Contextual Safeguarding Strategic

## Plan on a page

### Priority 1

Enable Partners and Communities to work together to protect Children and Young People

Local partners and communities will have access to information, knowledge and skills to identify child exploitation and be able to develop local initiatives to tackle issues and keep children safe from exploitation.

There will be strong local partnerships across our child safeguarding workforce including our MACE arrangements, education and third sector to information sharing.

Good access to resources related to child exploitation that facilitate effective practice.

Strong information sharing practices across partners in North Yorkshire, so that children at risk, persons who pose a risk to children, locations and themes are quickly identified and effective and timely safeguarding action taken.

### Priority 2

Focus on Prevention and Engagement of Children, Young People, Parents and Carers

NYSCP will utilise new and existing technologies to engage with children and young people to develop our understanding of child exploitation and how we can continue to improve responses.

Children and young people have access to knowledge and resources that increase confidence to spot the signs in themselves and their peers of potential exploitation, unhealthy relationships and know where to go to access support.

Parents and carers have the opportunity to be involved in practice initiatives and influence how we create safe spaces and act on information about potential perpetrators.

Parents and carers will be actively involved in the safety planning for their children at risk.

### Priority 3

Strengthen Multi-Agency work in response to children and young people identified as at risk and the targeting and disruption of those who pose a risk of harm and locations of concern

Existing partnership work will be built upon to manage and disrupt perpetrators and those who may pose a risk of harm by exploitation. Practice will continually develop so that roles and responsibilities are fully understood across the partnership.

Transition arrangements for young people nearing 16/17 at risk will be reviewed and strengthened to ensure the right support beyond the age of 18 years.

Where exploitation is known factor for Out of Authority children placed in North Yorkshire, effective information sharing will be in place through MACE arrangements to monitor risk and use escalation procedures to ensure that safety plans are effective and in place by the placing Authority and Private Settings.

### Priority 4

Utilise Research, Innovation and Quality Assurance to strengthen practice

Strategic and Operational arrangements for MACE are embedded into NYSCP Governance arrangements as well as other relevant management groups to ensure that Exploitation is given due priority and resources.

Robust Quality Assurance mechanisms are in place including learning and performance frameworks, effective escalation procedures and robust analysis of strategic and operational activity that identifies good practice and areas for improvement.

Horizon scanning identifies national, regional and local emerging trends, policy, practice, and learning around Exploitation that is shared across the partnership.

#### Indicators

#### Outcomes

Development of training, resources and NYSCP practice guidance across all MACE vulnerability areas.

Clear multi-agency problem solving plans to tackle child exploitation with a focus on creating sustainable safe spaces for children and young people.

NYSCP agencies work in a coordinated, effective way that puts children and their families at the heart of their work to tackle child exploitation.

Through our 'Be Aware' Knowledge Hub, resources for children and young people are created collaboratively with them.

Clear pathways for parents to feedback to NYSCP regarding practice and views are actively sought regarding the creation of resources/initiatives. This will be through direct engagement, engagement through Children and Family Services/ Parents Against Child Exploitation etc.

Parents/carers will feel empowered and listened to regarding keeping their children safe from exploitation.

Regular reviews will be undertaken to ensure sufficient provision of commissioned services across the county, continually identifying what works well and what could be developed to promote a range of diversionary activities/best practice.

A communication strategy is developed outlining our coordinated partnership approach to Exploitation. This will clearly articulate our approach to key groups (child/young person, parent/carer, community and partnership).

Through our 'Be Aware' Knowledge Hub contemporary and current information / guidance in relation to Exploitation is provided.

Opportunities will be identified and acted up on to develop research locally and showcase excellent practice wider and create an environment where practitioners can think creatively about approaches that fit local needs and can create sustainable safety for children and young people.

# Contact details:

North Yorkshire Safeguarding Children Partnership  
NYCC, South Block  
Room SB216,  
County Hall,  
Northallerton,  
North Yorkshire, DL7 8AE

[www.safeguardingchildren.co.uk](http://www.safeguardingchildren.co.uk)

[www.twitter.com/nyscp1](https://www.twitter.com/nyscp1)

Instagram @nyscp

[nyscp@northyorks.gov.uk](mailto:nyscp@northyorks.gov.uk)

## Contact us

**North Yorkshire County Council, County Hall, Northallerton, North Yorkshire, DL7 8AD**

Our Customer Service Centre is open Monday to Friday 8.00am - 5.30pm  
(closed weekends and bank holidays). Tel: **01609 780 780**

email: [customer.services@northyorks.gov.uk](mailto:customer.services@northyorks.gov.uk) web: [www.northyorks.gov.uk](http://www.northyorks.gov.uk)

If you would like this information in another language or format please ask us.

Tel: **01609 780 780** email: [customer.services@northyorks.gov.uk](mailto:customer.services@northyorks.gov.uk)